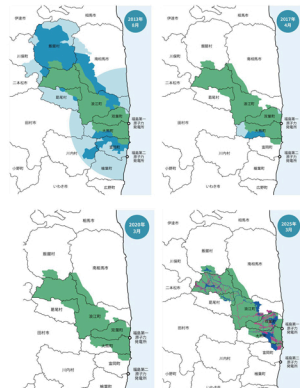


2011年12月に東京電力福島第一原子力発電所の冷温停止が確認されたことを踏まえ、避難指示区域の見直しを行い、2013年8月に避難指示解除準備区域・居住制限区域・帰還困難区域の3つの区域の設定が完了しました。その後、除染の実施や、インフラ整備の進歩を受けた避難指示の解除によって、住民の方が帰れる区域が増え、避難指示区域は福島県全体の2.2%まで減少しました。避難指示が解除された地域では生活環境の整備が進んでいます。

Following the confirmation of the cold shutdown of TEPCO's Fukushima Daiichi Nuclear Power Station in December 2011, the Areas under Evacuation Orders were reviewed. In August 2013, the designation of three areas, the Preparation Areas for Lift of Evacuation Orders, the Habitation Restricted Areas, and the Restricted Areas was completed. As decontamination efforts and infrastructure improvements progressed, Evacuation Orders were lifted, enabling more residents to return. Consequently, Areas under Evacuation Orders have been reduced to just 2.2% of the total land area of Fukushima. Improvements to the living environment have been ongoing in the areas where Evacuation Orders were lifted.

避難指示区域の変遷 Changes in Areas under Evacuation Orders



- 避難指示解除準備区域**
 Preparation Areas for Lift of Evacuation Orders
 引続き除染作業は継続されることとなるが、除染、インフラ整備、避難対策等の復旧計画のため必要数が段階的に削減し、住民の一部でも早期帰還を促す区域。
 Areas where Evacuation Orders remain in place, but where decontamination, infrastructure restoration, employment support, and other recovery/return-related efforts are being actively implemented to enable the earliest possible return of residents.
- 居住制限区域**
 Habitation Restricted Areas
 住民が除染作業の進捗や帰還の状況から今後帰還を継続することをめざし、将来的に住居が確保し、コミュニティを再構築することを目的とする。
 Areas where evacuation continues to be required in order to reduce the radiation exposure levels of residents, along with the restoration of the community.
- 帰還困難区域**
 Restricted Areas
 将来にわたって居住を抑制することを原則とした区域。2016年4月、たとえ1年未満とするとしても、将来的に帰還困難区域の全てを避難指示が解除し、復興・再建に資する効果が期待されるまで、帰還困難区域の一部でも帰還が困難な状況と想定されることとなる。
 Areas where residency is generally restricted in the long term. In August 2016, with the determination to "lift all Evacuation Orders for the Restricted Areas, even at short term, and to see responsibility for future reconstruction and revitalization," a decision was made to work towards the early recovery of the Restricted Areas.
- 特定復興再生拠点区域 (2017年5月創設)**
 Specified Reconstruction and Revitalization Base Areas
 (Established in May 2017)
 帰還困難区域のうち、産業を柱とした避難指示を解除し、居住を可能とする区域。
 Areas within the Restricted Area where Evacuation Orders are not to be lifted within the years, making settlement possible.
- 特定帰還居住区域 (2023年6月創設)**
 Specified Living Areas for Returnees
 (Established in June 2023)
 帰還困難区域のうち特定復興再生拠点区域において、2020年代をかつて、避難指示解除による自身の帰還及び当該区域の復興後生活の拠点を担う区域。
 Areas within the Restricted Area, outside the Specified Reconstruction and Revitalization Base Areas, where the aim is to facilitate the return of residents and rebuild their lives after their return through the lifting of Evacuation Orders.

生活環境の整備

Improvement of Living Conditions

避難指示の解除により役場や学校、買い物施設などの生活環境が年々整備されるなど、復興は着実に進んでいます。

As Evacuation Orders are lifted, essential infrastructure (such as town halls, schools, and shopping facilities) have gradually improved each year, and reconstruction is steadily progressing.

原発事故からの復興

Recovery from the Nuclear Disaster

避難指示区域は福島県の
面積の2.2%まで減少し、解除された
地域では生活環境の整備が進む。

The Areas under Evacuation Orders have been reduced to 2.2% of the total land area of Fukushima, and in the areas where Evacuation Orders were lifted, improvements to the living environment are underway.