

Great East Japan Earthquake Legacy Organizations

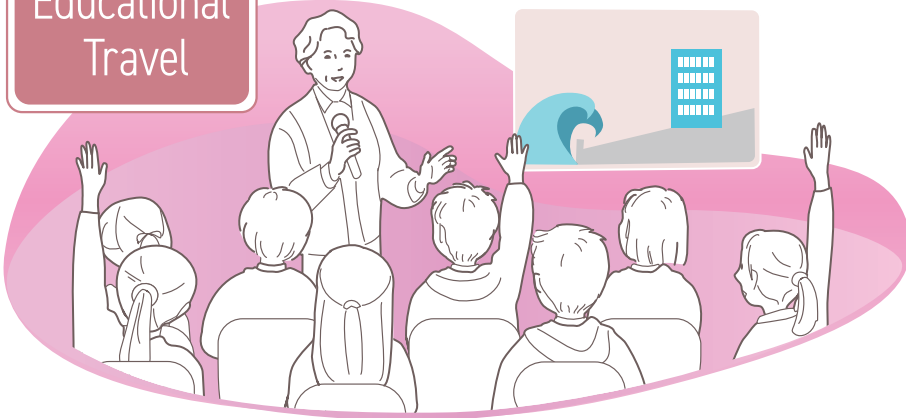
Storytellers



Corporate
Training



Educational
Travel



Introduction

The “Basic Guidelines for Reconstruction in Response to the Great East Japan Earthquake for the Period of the Second Reconstruction / Revitalization Period Onward” (Cabinet Decision of June 20, 2025), the basic guidelines under Article 3 of the Basic Act on Reconstruction in Response to the Great East Japan Earthquake, state that as a means of “(3) Communicating the image of reconstruction and passing on the memories and lessons of the Great East Japan Earthquake to future generations,” “by disseminating information on ‘learning’ and ‘preparedness’ through coordination among (national memorial and prayer facilities,) memorial sites in affected areas, disaster ruins, and memorial facilities, we will deepen understanding of the lessons learned from this disaster and enhance disaster prevention capabilities.”

Local groups that pass on the memories and lessons of the Great East Japan Earthquake through a variety of methods play an important role in passing on these memories and lessons, promoting understanding, and improving disaster preparedness. As such, this guidebook was produced on the occasion of the 15th anniversary of the Great East Japan Earthquake so that individuals who may develop an interest in the Great East Japan Earthquake and seek to visit the affected area in the future can smoothly obtain consistent information about the Great East Japan Earthquake legacy organizations and programs in the entire affected area.

This guidebook not only provides an overview of Great East Japan Earthquake legacy organizations and programs and basic information such as reservation methods and fees, but also describes what you can learn by actually experiencing the programs. Please put this information to use when searching for a program that meets your specific needs and requirements.

We hope this guidebook will be of assistance to educational institutions planning educational tours for purposes of disaster prevention education, companies and organizations considering training programs that make use of learning from the recovery and reconstruction process, and other visitors to the Tohoku region who seek to learn more about the Great East Japan Earthquake.

Rurubu Special Edition

Great East Japan Earthquake Memorial Facilities Guide



The “Rurubu Special Edition: Great East Japan Earthquake Memorial Facilities Guide” (published in 2022 and revised in 2024), which is available on the Reconstruction Agency’s website, introduces memorial facilities and disaster ruins that provide information on the state of damage caused by the Great East Japan Earthquake, recovery and reconstruction efforts, knowledge on disaster prevention and disaster mitigation, and more. Please refer to this publication in conjunction with this guidebook.

Issued by: Reconstruction Agency
Planned, edited and produced by: JTB Publishing, Inc.



Reconstruction Agency website

Contents

IWATE

01	Miyako Tourism and Cultural Exchange Association.....	4
02	Sanriku Railway (Disaster Study Train)	5
03	Oraga-Otsuchi Yume Hiroba	6
04	Nonprofit Organization (NPO) KirikiriKoku	7
05	Tsunami Memorial Hall	8
06	U-Support	9
07	Marugoto Rikuzentakata, A General Incorporated Association ...	10
08	Rikuzentakata City Tourism and Products Association.....	11
09	Tamago Mura	12

MIYAGI

10	Ruins of the Great East Japan Earthquake Kesenuma City Memorial Museum	13
11	Kesenuma Earthquake Disaster Reconstruction Storyteller Guide (KESENUMA BASE CAMP)	14
12	Minamisanriku 311 Memorial.....	15
13	Minami Sanriku Hotel Kanyo Storyteller Bus.....	16
14	Umi no Mieru Inochi no Mori	17
15	Minamisanriku-cho Council of Social Welfare	18
16	Saryo Studio	19
17	MIYAGI 3.11 TSUNAMI DISASTER Memorial Museum	20
18	Okawa Densho no Kai (Okawa Disaster Memorial Association) Ishinomaki City Okawa Elementary School Ruins	21
19	Ishinomaki City Kadonowaki Elementary School Ruins	22
20	Ogatsu Flower Story	23
21	MORIUMIUS	24
22	Onagawa Town Tourist Association	25

23	SAY'S Higashimatsushima	26
24	KIBOTCHA (Kirintyou Inc.)	27
25	Kinoya Ishinomaki Suisan inc	28
26	3.11 Memorial Network	29
27	Ruins of the Great East Japan Earthquake: Sendai Arahama Elementary School	30
28	Sendai 3/11 Memorial Community Center	31
29	Gamo Nakano Kyoshukan	32
30	Tsunami Recovery Memorial Museum "Mémoire de Yuriage"	33
31	Fram Natori, A General Incorporated Association (Association to Tell the Story of the Yuriage Earthquake)	34
32	Iwanuma Earthquake Disaster Storyteller's Group (Iwanuma Millennium Hope Hills Exchange Center)	35
33	Yamamoto Kataribe Association (Ruins of the Great East Japan Earthquake: Nakahama Elementary School, Yamamoto-cho)	36

FUKUSHIMA

34	Soma City Tourism Association	37
35	Asubito Fukushima	38
36	OWB CO., LTD	39
37	The Great East Japan Earthquake and Nuclear Disaster Memorial Museum	40
38	ASANONENSHI CO., LTD	41
39	NPO Tomioka-machi 3.11 Talking Group	42
40	TEPCO Decommissioning Archive Center	43
41	J-VILLAGE Inc.	44
42	Iwaki 3.11 Memorial and Revitalisation Museum	45

Please convert ● to @ before using the email address.

Miyako Tourism and Cultural Exchange Association



Scene of guide activities



Ruins of the Great East Japan Earthquake [Taro Kanko Hotel]



Shows the water level of past tsunamis

Photo credits

1 2 3 Miyako Tourism and Cultural Exchange Association HP

Program Information

- At The Tsunami Remains Taro Kanko Hotel, visitors can view footage showing the threat of the tsunami, which was taken by the hotel's president at the time of the tsunami's arrival, and compare it to the current landscape that lies before them. Visitors will also have the opportunity to ponder the meaning of coexisting with the sea by touring other scenic spots, such as the Sanno-iwa Rocks. Why were so many people killed in Taro, which historically experienced many tsunamis and was supposed to be a "town of tsunami disaster prevention" that had made advanced efforts in that area, such as building huge seawalls? Listen and learn about the lessons gained from that great toll on human life while touring the town.

Miyako Tourism and Cultural Exchange Association

How to Apply	Email: manabo●kankou385.jp Phone:0193-77-3305 FAX: 0193-65-7501 Address : 2-5-1 Taro Miyako city Iwate prefecture
Application Deadline	• Applications accepted on the same day if available. Contact required.
Time Required	• Regular Course: 60 min.; Eco Course (Trial Course): 90-120 min.
Capacity	• Regular Course: Up to 6 buses; Eco Course: Up to 6 buses
Contents and Conditions of Foreign Language Support	• Can be supported with use of translation equipment, etc. (English-language displays, English-language pamphlets, use of translation machines, etc.) • Possible if participants arrange for an interpreter to accompany them
Activity Period and Hours	April 1 - October 31 (9:00 AM - 4:00 PM); November 1 - March 31 (9:00 AM - 3:30 PM)
Days Closed	New Year's holiday period
Fees	• Regular Course: 4,000 yen for 1-9 participants; 6,000 yen for 10 or more participants • Eco Course (Trial Course): 10,000 yen for 1-9 participants; 12,000 yen for 10 or more participants
Directions and Parking Availability	Available
Other	• Guide fee increase scheduled for next year
Website	https://kankou385.jp/special_kiji/4642/

Sanriku Railway (Disaster Study Train)



Scene of storytelling by an employee



Exterior view of the earthquake disaster study train



Scene of a study tour

Photo credits

1 Sanriku Railway HP 2 Sanriku Railway Disaster Study Train 3 Sanriku Railway Study Tour

Program Information

- While riding on the train and viewing the scenery of the region, participants can listen to the specific explanations that only a railroad company with close ties to the region can provide about how the municipality along the Sanriku Railway line was damaged by the earthquake and how the region has reconstructed in the 15 years that have passed.
- By learning about not only the horror of the damage from the earthquake, but also the efforts made by the communities along the route to overcome the earthquake disaster, the ingenuity and characteristics of community development, and the vantage point of the residents, the participants can think positively about what they should do if they encounter a disaster in the future.

Sanriku Railway (Disaster Study Train)

How to Apply	Email: dantai@sanrikutetsudou.com Phone: 0193-71-1170 Fax: 0193-71-1200 Address: 1-1-80 Miyamachi, Miyako-shi, Iwate
Application Deadline	At least 1 month before the desired date
Time Required	Varies depending on the section of the train (e.g., Unosumai Station – Miyako Station: about 75 minutes)
Capacity	1 to 200 people * Seating capacity varies by vehicle
Multilingual Support Details and Conditions	Possible if participants arrange for an interpreter to accompany them
Activity Period & Hours	9:00–17:30
Closed Days	Open year round
Fees	General vehicles: 50,300 yen ~
Guide Details and Parking Availability	Parking available (spaces vary by station), large buses allowed * Please inquire for details.
Others	There is also an inspection and training program for companies. For details, please contact the General Affairs Department, Sanriku Railway (call at 0193-62-8900).
Website	https://www.sanrikutetsudou.com/

Oraga-Otsuchi Yume Hiroba



Fieldwork in Otsuchi Town



Workshop



Group discussion

Photo credits

1**3** Oraga-Otsuchi Yume Hiroba **2** IWATE/TSUTAERU HP

Program Information

- ◆ Decision-making workshop
 - In the decision making workshop, participants will discuss “issues with no right answers” that Otsuchi residents faced at the time of the disaster and during the reconstruction, and experience the process of coming to a “conclusion” through their own “personal experiences” in order to understand the challenges of reconstruction and the resolve needed to make decisions.
 - The topics of discussion include “how tall the seawall should be” and “whether to preserve the damaged town hall building in Otsuchi,” issues that were debated in Otsuchi after the disaster. By hearing about how and why Otsuchi actually came to the conclusions they did, and what impact those decisions are having today, the participants can deepen their understanding of the case study.
- ◆ Otsuchi Town storyteller’s guide
 - The Great East Japan Earthquake and Tsunami. What happened at that time, and what people felt and thought as they lived their lives during the subsequent reconstruction? Hear firsthand as you tour the town of Otsuchi with a guide.
 - “Could you have prevented it?” “Would you have been able to escape it?” Based on questions like these, you can participate in the tour from the viewpoint of “what you would have done” and develop your own thoughts about it.
 - In addition to the above, there is also a “lecture-type program” in which a former mayor of the town of Otsuchi and a former head of the local community association give lectures. It is also possible to combine the tour with a firewood chopping experience, zazen, seine netting experience, and overnight stay.

Oraga-Otsuchi Yume Hiroba

How to Apply	Email: mioinusa@gmail.com Phone: 080-8209-2330 FAX: 050-3145-2685 Address: 9-29 Suehiro-cho, Otsuchi-cho, Kamihei-gun, Iwate
Application Deadline	At least 7 days beforehand
Time Required	Varies depending on the program (Please inquire in advance)
Capacity	1 to 240 people (up to 6 buses)
Multilingual Support Details and Conditions	Multilingual support available
Activity Period & Hours	9:00–17:00 all year round (Please inquire in advance)
Closed Days	Obon holidays, year-end and New Year holidays, and on and around March 11
Fees	<ul style="list-style-type: none"> • Storyteller’s guide 1,100 yen/person (tax included) * 5,500 yen <ul style="list-style-type: none"> • Workshop, etc. 5,500 yen/person (tax included)
Guide Details and Parking Availability	Bus, car, walking
Website	http://www.oraga-otsuchi.jp/
Others	Available in English. Rain or shine. However, the tour may be cancelled if: <ul style="list-style-type: none"> • there is a request from a public institution to cancel the tour; • a warning or alarm is issued due to stormy weather or earthquakes, etc., and it is judged to be dangerous.

Nonprofit Organization (NPO) KirikiriKoku



Wood-chopping experience



Disaster prevention food making experience



Tree climbing experience

Photo credits

1 **3** KirikiriKoku **2** Otsuchi Tourism Exchange Association HP

Program Information

- The former president of the group, who was unable to sleep at night when the earthquake struck, made a bonfire, which calmed him down and gave him the desire to utilize the forest and survive the earthquake disaster. This led to the establishment of this organization. Participants can hear this story through video, picture-story shows, and so on.
- The organization offers a “disaster prevention food making experience” program in which participants chop their own firewood and cook rice with it, using limited resources through trial and error. It also offers other experience programs such as making wood-fired pizza and tree climbing.

Nonprofit Organization (NPO) KirikiriKoku	
How to Apply	Email: info●kirikirikoku.org Accepted by email only. Address: 3-10-6 Kirikiri, Otsuchi-cho, Kamihei-gun, Iwate
Application Deadline	At least 1 week beforehand (easier to adjust if multiple preferred dates are provided)
Time Required	Firewood chopping + Earthquake disaster lecture: 1 hour 30 minutes or more, + Disaster prevention food making experience: 3 hours or more
Capacity	Less than 60 people (3 hours or more for 25 people or more)
Multilingual Support Details and Conditions	Multilingual support available (English only) Possible if participants arrange for an interpreter to accompany them (for foreign languages other than English)
Activity Period & Hours	9:00–15:00 all year round
Closed Days	Saturdays, Sundays, national holidays, Obon holidays, year-end and New Year holidays, etc.
Fees	Firewood chopping + Earthquake disaster lecture: 10,000 yen for 10 people or less, + 1,000 yen per person for more than 10 people, + Disaster prevention food making experience: 1,600 yen per person and up (tax not included)
Guide Details and Parking Availability	Parking available
Others	Please inquire in advance because fees vary depending on the desired time, age, and content. Possible to combine and rotate experiences with other program providers for schools with large numbers of students.
Website	https://kirikirikoku.org/

Tsunami Memorial Hall



Scene of a storyteller



Exterior view of the facility



Local experience program

Photo credits

1 2 3 Tsunami Memorial Hall HP

Program Information

- Storytellers at the hall convey learnings about the tsunami damage to Kamaishi City and Unosumai Town, the events and lessons learned at that time, and the results of disaster prevention education, offering insight on how to prepare for future disasters. The hall also holds workshops for visitors to think about what they should include in their own disaster prevention backpacks.
- Also offered is a program in which participants will walk along the road on which students of elementary and junior high schools evacuated, almost all of whom were saved, despite the great number of lives lost in Unosumai, and experience the events of that time. Additionally, training sessions on reconstruction and town planning are held that combine casework set in the immediate aftermath of the earthquake with strolls through the town.

Tsunami Memorial Hall	
How to Apply	Email: tomosu●dmo-kamaishi.com Phone: 0193-27-5666 Address: 4-901-2 Unosumai-cho, Kamaishi-shi, Iwate
Application Deadline	Up to one week prior to acceptance
Time Required	1.5-hour course, 2.5-hour course, etc. *Differs according to the program
Capacity	Up to 30 participants *Differs according to the program
Contents and Conditions of Foreign Language Support	<ul style="list-style-type: none"> • Interpreters can be arranged by the organization • Possible if participants arrange for an interpreter to accompany them
Activity Period and Hours	9:30 AM - 5:30 PM Winter season (November to February) 9:30 AM - 5:00 PM
Days Closed	Wednesdays and New Year's holiday period
Fees	<ul style="list-style-type: none"> • 1.5-hour course (Choice of one of the following: Evacuation Route Experience, Stadium Tour, or Flood Gate/Seawall Tour) 1,000 yen
Directions and Parking Availability	Available
Other	Online storytellers available. Web reservations available.
Website	https://kamaishi-dmc.com/ https://visitkamaishi.jp/training-program/

U-Support



Scene of study tour support

Photo credit

1 U-Support

Program Information

- The IcoWell Sumita exhibition building recreates the exterior and interior of the wooden temporary housing units from the time of the earthquake, showcasing the logistical support activities conducted during the disaster. There are also paid guides by employees of organizations that were providing community support for temporary housing at the time.

U-Support	
How to Apply	Email: u.sprt.sumita@gmail.com (Applications accepted by email only) Address: 31-2 Honmachi, Setamai, Sumita-cho, Kesen-gun, Iwate
Application Deadline	At least 14 days beforehand
Time Required	1 hour (2 hours with options)
Capacity	Up to 10 people (approx.)
Multilingual Support Details and Conditions	Possible if participants arrange for an interpreter to accompany them
Activity Period & Hours	10:00–18:00 all year round
Closed Days	Mondays, year-end and New Year holidays Please contact us if you visit on weekends, national holidays, or during the summer closure period.
Fees	5,500 yen/time
Guide Details and Parking Availability	7 regular cars, etc.
Others	
Website	https://www.icowell-sumita.com/ https://www.tohokukanko.jp/manabi/attractions/detail_1011584.html

Marugoto Rikuzentakata, A General Incorporated Association



Learning from earthquake remains

Strolling around a town that has been elevated by ten meters

Fishing boat experience

Photo credits

1 2 3 Marugoto Rikuzentakata, A General Incorporated Association HP

Program Information

- Depending on the needs of individual visiting groups, participants may have original training programs coordinated based on a wide range of content unique to Rikuzentakata, such as disaster prevention learning, nature experiences, local exchange, history learning, and private lodging.
- The program offers a variety of content that includes interaction with local residents in a new urban area that has been elevated ten meters, workshops related to consensus-building based on the gap between the voices of the government and citizens on local issues, and development of new project plans based on the status of projects in the city.

Marugoto Rikuzentakata, A General Incorporated Association

How to Apply	Email: info●mrgt.or.jp Phone: 0192-22-8354 Address: 150-101 Takahata, Yonesaki-cho, Rikuzentakata-shi, Iwate
Application Deadline	Approx. two months prior to the program implementation date
Time Required	Depends on the content of experiences
Capacity	• About 80-150 people (Please consult with us, as we may be able to accept a larger number than stated.)
Contents and Conditions of Foreign Language Support	• Possible if participants arrange for an interpreter to accompany them
Activity Period and Hours	• 10:00 AM - 5:00 PM
Days Closed	• Closed irregularly
Fees	• See the website for details
Directions and Parking Availability	• About 1-5 large buses depending on the location of the experience
Other	—
Websites	• http://marugoto-rikuzentakata.com/ • http://marugoto-rikuzentakata.com/contents

Rikuzentakata City Tourism and Products Association



1 Park guide sharing the charm of Rikuzentakata city



2 Scene of park guide activities



3 Scene from a tour of the interior of the earthquake remains

Photo credits

1 2 3 Rikuzentakata City Tourism Products Association HP

Program Information

- The Takatamatsubara Memorial Park for Tsunami Disaster Guide is a new guide service launched in summer 2021 to share the lessons of the Great East Japan Earthquake and the appeal of Rikuzentakata City.
- Within the Takatamatsubara Memorial Park for Tsunami Disaster, tours are guided by distinctive local residents who have been officially certified by the Rikuzentakata City Tourism and Products Association.
- We will guide you through the park's remaining earthquake disaster structures, including the Miracle Lone Pine Tree, Kesen Junior High School and the Former Topic 45 (Michi-no-Eki (Rest Stop) Takatamatsubara), where interior viewing is possible with a park guide.

Rikuzentakata City Tourism and Products Association

How to Apply	Email: rikutaka-kankou●crest.ocn.ne.jp Phone: 0192-54-5011 FAX: 0192-54-5013 Address: Machi no Engawa, 300-2 Namisugi, Takada-cho, Rikuzentakata-shi, Iwate
Application Deadline	At least 2 weeks beforehand (Please use the dedicated application form on our website)
Time Required	About 60 to 120 minutes (varies by course)
Capacity	About 180 people maximum
Multilingual Support Details and Conditions	Multilingual support available
Activity Period & Hours	9:00–18:00 (until 17:00 in winter)
Closed Days	Year-end and New Year holidays
Fees	Please visit the website for details of fees.
Guide Details and Parking Availability	Available (within Takatamatsubara Memorial Park for Tsunami Disaster and Michi-no-Eki Takatamatsubara (Rest Stop))
Others	The tour will be conducted entirely on foot.
Website	https://takanavi.org/shinsai/

Tamago Mura



Exterior view of Tamagomura (‘Egg Village’)

Photo credit

1 Tamago Mura

Program Information

- At the temporary shopping district built after the Great East Japan Earthquake, you can hear about its unique background, being the only one in Japan operated by an individual who purchased it outright, as well as its revitalization efforts through preemptive reconstruction and community activities.

Tamago Mura	
How to Apply	Email: info●tamagomura.jp Phone: 0192-47-3287 Address: 93-1 Osumi, Takada-cho, Rikuzentakata-shi, Iwate
Application Deadline	At least 10 days beforehand
Time Required	About 90 minutes
Capacity	10 to 50 people (Please inquire in advance for groups of 50 or more)
Multilingual Support Details and Conditions	Possible if participants arrange for an interpreter to accompany them
Activity Period & Hours	For reservations other than closed days: 9:00–18:00
Closed Days	Year-end and New Year holidays (December 29–January 3)
Fees	Basic fee 20,000 yen (including tax) + meals 1,100 yen (including tax)/person
Guide Details and Parking Availability	Passenger cars: 35 Large buses: 2
Others	
Website	https://www.tamagomura.jp/

Ruins of the Great East Japan Earthquake Kesennuma City Memorial Museum



Scene of a storyteller



Former Kesennuma Koyo High School



The tsunami washed cars into the school building

Photo credits

1 Japan Economic Research Institute

2,3 Ruins of the Great East Japan Earthquake Kesennuma City Memorial Museum

Program Information

- Visitors can tour the Memorial Museum, which includes the earthquake-damaged structure of the former Kesennuma Koyo High School, and hear stories about the damage at the time, the geography and history of the Kesennuma area, and the experiences of the storytellers themselves, alongside the exhibits. Local middle and high school students also serve as storytellers.
- The Memorial Museum also hosts “Disaster Prevention Seminars” where experts from various fields provide insights and share case studies on regional disaster prevention and disaster education. It also offers reflection workshops where participants review what they learned during their visit and deepen their understanding by applying it to their own lives.

Ruins of the Great East Japan Earthquake Kesennuma City Memorial Museum

How to Apply	Email: info@kesennuma-memorial.jp
Application Deadline	At least 1 month beforehand
Time Required	About 90 minutes
Capacity	1 to 20 people
Multilingual Support Details and Conditions	Multilingual support available Available with translation equipment, etc. Possible if participants arrange for an interpreter to accompany them
Activity Period & Hours	9:30–17:00 (until 16:00 in winter)
Closed Days	Mondays (or the following day if Monday is a national holiday) Year-end and New Year holidays (December 29–January 4)
Fees	Storytelling guide: School educational activities: 3,000 yen (1 to 20 people) General fee: 6,000 yen (1 to 20 people)
Guide Details and Parking Availability	Available * Free parking available • Parking Lot 1: 56 regular cars, 2 for persons with disabilities • Parking Lot 2: 17 medium-sized and large buses, 55 regular cars
Others	Guides may not be available depending on circumstances. Please contact us in advance.
Website	https://www.kesennuma-memorial.jp/

Kesennuma Earthquake Disaster Reconstruction Storyteller Guide (KESENNUMA BASE CAMP)



Scene of guide activities

Photo credit

1 Kesennuma Earthquake Disaster Reconstruction Storyteller Guide

Program Information

- Visitors can tour the Kesennuma City Reconstruction Memorial Park and the Spiral Staircase of Life (former Abe Family Residence), while listening to storytellers share lessons learned from experiencing the disaster, such as the preciousness of life and the importance of disaster preparedness, along with insights on disaster-resilient community planning that also preserves ocean views.

Kesennuma Earthquake Disaster Reconstruction Storyteller Guide (KESENNUMA BASE CAMP)

How to Apply	Email: k-paseo●k-macs.ne.jp Phone: 090-6243-7246 (*We will return your call if we are unable to answer the phone due to receiving visitors, etc.) Address: 4-5 Uoichiba-mae, Kesennuma-shi, Miyagi
Application Deadline	At least 3 days beforehand
Time Required	1 hour to 1 day
Capacity	Up to 100 people (approx.)
Multilingual Support Details and Conditions	Available with translation equipment, etc.(English-language displays on exhibits, English-language pamphlets, use of translation equipment, etc.) Possible if participants arrange for an interpreter to accompany them
Activity Period & Hours	10:00–18:00
Closed Days	Monday and Tuesday
Fees	Please inquire in advance
Guide Details and Parking Availability	Varies by location
Others	
Website	https://kesennuma-kanko.jp/

Minamisanriku 311 Memorial



Scene of a storyteller



Scene of fieldwork



Scene of a storyteller

Photo credits

1 2 3 Minamisanriku 311 Memorial HP

Program Information

- In this facility's stroll-around storytelling program, visitors can learn with all five of their senses about what happened in the Great East Japan Earthquake and the lessons learned by looking closely at the former Disaster Prevention Office Building, which are remains from the earthquake, and comparing it with photos of the town landscape before the earthquake while receiving explanations.
- Additionally, in the learning program held at the Minamisanriku 311 Memorial, participants can watch video testimonies from residents and discuss with others how they would think and act if they were there, thereby coming to terms with a natural disaster as if one personally affected their own lives.

Minamisanriku 311 Memorial	
How to Apply	Email: m311m●m-kankou.jp Phone: 0226-28-9215 FAX: 050-3397-1726 Address: 200-1 Itsukamachi, Shizugawa, Minamisanriku-cho, Motoyoshi-gun, Miyagi
Application Deadline	Up to one week prior to acceptance * Please contact to apply as soon as possible.
Time Required	Learning with Storytellers Program Approx. 2-2.5 hours (60 min. lecture on the earthquake disaster + 60-90 min. bus tour)
Capacity	From 10 participants
Contents and Conditions of Foreign Language Support	• Can be supported with use of translation equipment, etc. (English-language displays, English-language pamphlets, use of translation machines, etc.) • Possible if participants arrange for an interpreter to accompany them
Activity Period and Hours	(March to November) 9:00 AM - 4:00 PM (December to February) 9:00 AM - 4:00 PM
Days Closed	Tuesdays and New Year's holiday period
Fees	Learning with Storytellers Program • Lecture on earthquake disaster + bus tour *Venue fee not included Students: 19,800 yen for up to 20 participants (Additional 990 yen per person for 21 or more participants)
Directions and Parking Availability	Available
Other	"Online storytelling," "workshops," etc., also conducted
Website	https://m311m.jp/

Minami Sanriku Hotel Kanyo Storyteller Bus



Storyteller bus



Earthquake Remains: Takano Hall



Storytellers convey information to the world

Photo credits

1 2 3 Minami Sanriku Hotel Kanyo HP

Program Information

- While taking a bus tour of the “Takano Hall,” the “former Disaster Prevention Office Building,” and other earthquake remains in the town, visitors can listen to the stories of hotel staff and, in the process, learn about valuable real-life experiences and lessons that would be difficult to imagine and impossible to know simply by looking around.
- The storyteller bus initiative was started when, immediately after the earthquake, visitors to the town were given guided tours of the heavily damaged coastal areas that were conducted by bus with commentary. Staff who moved to Minamisanriku after the disaster are also active as storytellers.

Minami Sanriku Hotel Kanyo Storyteller Bus	
How to Apply	Email: Please use the inquiry form on the website. Phone: 0226-46-2442 (Minami Sanriku Hotel Kanyo switchboard) FAX: 0226-46-6200 Address: 99-17 Kurosaki, Minamisanriku-cho, Motoyoshi-gun, Miyagi
Application Deadline	Up to one day prior to acceptance When staying overnight, applications must be made to the front desk no later than 9:00 PM on the day before departure.
Time Required	(Regular Course) Approx. 60 min. (Takano Kaikan Special Course) Approx. 90 min.
Capacity	From 1 person *Negotiable
Contents and Conditions of Foreign Language Support	Possible if participants arrange for an interpreter to accompany them
Activity Period and Hours	(Regular Course) 8:45 AM - 9:45 AM (Takano Kaikan Special Course) 10:15 AM - 11:45 AM
Days Closed	January 5 · 6 · 7 · 8, 2027 February 3 · 4 · 18 · 19, 2027 March 16 · 17, 2027
Fees	Regular Course: 500 yen for adults (junior high school student age and older); 250 yen for children (elementary school student age and younger) Takano Kaikan Special Course: 1,000 yen for adults (junior high school student age and older); 500 yen for children (elementary school student age and younger)
Directions and Parking Availability	Available
Other	Reservations over the phone can also be made even without plans to stay overnight (8:45 AM departures only)
Website	https://www.mkanyo.jp/

Umi no Mieru Inochi no Mori



Visitors can take part in self-catering and a camping experience

Photo credit

1 Umi no Mieru Inochi no Mori HP

Program Information

- Participants can take part in “disaster preparedness” education, such as shelter experiences, cooking for themselves, and campsite maintenance, as well as volunteer forest-building. These are conducted not only to learn about the damage caused by the earthquake and the thoughts and feelings of those who experienced it, but also to apply the lessons learned in future disasters.

Umi no Mieru Inochi no Mori	
How to Apply	Email: umimori0311@gmail.com Phone: 0226-46-2442 Address: Inside Minami Sanriku Kanyo, 99-17 Kurosaki, Minamisanriku-cho, Motoyoshi-gun, Miyagi
Application Deadline	Up to 30 days prior to acceptance
Time Required	From 150 min. *Please ask about other times.
Capacity	5-100 participants (Guideline)
Contents and Conditions of Foreign Language Support	Possible if participants arrange for an interpreter to accompany them
Activity Period and Hours	9:00 AM - 5:00 PM year-round
Days Closed	None
Fees	Includes experience fee of 1,100 yen per person + tool rental of 300 yen per person
Directions and Parking Availability	Please park in the hotel parking area, then walk from there. (Takes approx. 15 min. to the summit)
Other	
Website	https://umimori2011.wixsite.com/mysite

Minamisanriku-cho Council of Social Welfare



Storyteller activities at Yui no Sato



Yui no Sato (exterior view)



Exterior view of the facility

Photo credits

1 Minamisanriku-cho Council of Social Welfare facebook

2 3 Minamisanriku-cho Council of Social Welfare HP

Program Information

- At Yui no Sato, the Minamisanriku-cho Council of Social Welfare staff conduct a storyteller program where visitors can learn about community building and the know-how for forming communities, achieved through the steady accumulation of disaster victim support efforts from the Great East Japan Earthquake to the present day.
- Staff members who themselves were disaster victims built trust with residents through over one million door-to-door visits, enabling them to implement a unique resident-led community building process. Participants can hear directly from those who conducted these visits, including their thoughts at the time.

Minamisanriku-cho Council of Social Welfare	
How to Apply	Email: mssk1100●minamisanriku-syakyo.or.jp Phone: 0226-29-6452 FAX: 0226-46-5158 Address: 38-152 Tennozsan, Shizugawa, Minamisanriku-cho, Motoyoshi-gun, Miyagi
Application Deadline	At least 1 month beforehand
Time Required	• Storytelling only: 1 hour • Storytelling + workshop: 2 hours * Other requests can be accommodated
Capacity	30 people per session (rotation possible) * Minimum 2 to 30 people *If there are more than 30 people, we will consult with you about the venue.
Multilingual Support Details and Conditions	Available with translation equipment, etc. Possible if participants arrange for an interpreter to accompany them
Activity Period & Hours	8:30–17:00 all year round
Closed Days	Saturdays, Sundays, national holidays, and year-end and New Year holidays (December 29–January 3) * We will try to accommodate your request, even for days when the facility is closed.
Fees	300 yen per person including materials and café beverages
Guide Details and Parking Availability	Free parking available (large buses accepted)
Others	Please use it as a venue for interaction with local residents and training for executives and employees.
Website	https://www.minamisanriku-syakyo.or.jp/

Saryo Studio



Scene of storytelling by Shinichi Sato

Photo credit

1 Minamisanriku Tourism Portal Site

Program Information

- Viewing photographs that capture the pre-disaster streetscape, the tsunami approaching the Disaster Prevention Municipal Building, and the town’s reconstruction process after everything was swept away—all from the residents’ perspective—the photographer himself speaks about the inner conflict and thoughts he experienced while capturing these scenes.

Saryo Studio	
How to Apply	Email: saryoss46@oasis.ocn.ne.jp Phone/FAX 0226-28-9291 Address: B-1, Minamisanriku Sun Sun Shopping Village, 201-5 Itsuka-machi, Shizugawa, Minamisanriku-cho, Motoyoshi-gun, Miyagi
Application Deadline	At least 3 days beforehand
Time Required	Photo Exhibition Hall: About 10 to 15 minutes Storytelling: About 40 to 100 minutes
Capacity	Photo Exhibition Hall: 10 to about 15 people Storytelling: 1 to 40 people (approx.)
Multilingual Support Details and Conditions	—
Activity Period & Hours	Photo Exhibition Hall: 10:00–17:00 (last admission 16:30) Storytelling: 9:00–16:00 (last admission 15:00)
Closed Days	Tuesdays
Fees	Storytelling fee: 5,000 yen Admission fee charged separately (200 yen for general admission)
Guide Details and Parking Availability	Minamisanriku Sun Sun Shopping Village: Approx. 200 vehicles (including approx. 5 large buses)
Others	—
Website	—

MIYAGI 3.11 TSUNAMI DISASTER Memorial Museum



Exterior view of the Miyagi 3.11 Tsunami Disaster Memorial Museum

Photo credit
 1 Miyagi Prefecture

Program Information

- The exhibition not only provides a video that shows the horror of tsunami from a scientific perspective and with realistic images but also introduces the prefecture's facilities, storytelling groups, and local reconstruction efforts for handing down information about the disaster using panels and videos.

MIYAGI 3.11 TSUNAMI DISASTER Memorial Museum	
How to Apply	Email: miyagi-denshokan●311support.com Phone: 0225-98-8081 Address: 2-1-56 Minamihama-cho, Ishinomaki-shi, Miyagi
Application Deadline	At least 5 days prior to the scheduled date of visit
Time Required	About 30 to 60 minutes
Capacity	Up to about 40 people (Please inquire in advance)
Multilingual Support Details and Conditions	Available with translation equipment, etc. Possible if participants arrange for an interpreter to accompany them
Activity Period & Hours	9:00–17:00 all year round
Closed Days	Mondays (or the following day if Monday is a national holiday), year-end and New Year holidays (December 29–January 4) * Open on the 11th of every month regardless of the day of the week or holiday
Fees	Free
Guide Details and Parking Availability	Free parking available (large buses acceptable)
Others	No English-speaking staff on duty. Multilingual explanations available for the exhibition panels via QR codes. Video theater available.
Website	https://www.pref.miyagi.jp/site/denshokan/index.html

Okawa Densho no Kai (Okawa Disaster Memorial Association) Ishinomaki City Okawa Elementary School Ruins



Scene of fieldwork



Exterior view of Okawa Elementary School



Scene of guide activities conducted by a storyteller

Photo credits

1 Waseda University Hoshikai 23 Reconstruction Agency

Program Information

- Located near the mouth of the Kitakami River, Okawa Elementary School in Ishinomaki City, Miyagi Prefecture, is where 74 children and 10 teachers lost their lives in the tsunami caused by the Great East Japan Earthquake. Visitors tour key points such as the school gate, school buildings, and the hill behind the school while listening to explanations about the area and school before the disaster, and the actions taken on the day of the disaster.
- Participants will learn about the movement of a river tsunami that reached the school located 3.7 km inland from the ocean. By examining the tragic fact that lives could not be saved despite the availability of time, information, and possible means of escape before the tsunami arrived, participants may reflect on the importance of advance preparedness and how it can lead to life-saving actions during disasters.

Okawa Densho no Kai (Okawa Disaster Memorial Association) Ishinomaki City Okawa Elementary School Ruins

How to Apply	Apply via the 3.11 Memorial Network website https://311support.com/training/okawa-guide Phone: 0225-98-3691 (3.11 Memorial Network) FAX: 0225-98-3692 (3.11 Memorial Network)
Application Deadline	At least 1 week beforehand if possible
Time Required	60 minutes
Capacity	1 to 80 people per guide
Multilingual Support Details and Conditions	Multilingual support available Available with translation equipment, etc. Only English At this time, there is one member who can provide explanations in English
Activity Period & Hours	Until sunset all year round. Exhibition rooms are open 9:00–17:00, closed Wednesdays (toilets are available)
Closed Days	Closed on Wednesdays (toilets are available)
Fees	Basically 1 to 10 people: 7,000 yen; 11 people to 1 large bus capacity: 10,000 yen; Additional 10,000 yen per bus
Guide Details and Parking Availability	Available
Others	* Please consult with us at the time of application for detailed information on the time required, number of people, fees, etc. * Contact the Okawa Densho no Kai at okawa.densho@gmail.com .
Website	https://www.facebook.com/ookawadensyo/ (direct contact) https://311support.com/training/okawa-guide

Ishinomaki City Kadonowaki Elementary School Ruins



Exterior view of the elementary school ruins



Affected vehicles on display in the gymnasium



Guide activities conducted by museum director, who also serves as commentator

Photo credits
1 2 3 Reconstruction Agency

Program Information

- At Kadonowaki Elementary School, where the tsunami- and fire-damaged school buildings are preserved as disaster ruins, participants first receive an explanation of the damaged vehicles displayed in the gymnasium and an overview of the damage across all of Ishinomaki. They then tour the ruins and exhibition hall with a guide, learning about the actual damage and the local situation.
- Through paintings and poems displayed in the corridor space, a temporary housing unit visitors can actually enter, and videos themed on nature's regeneration and cycles, visitors can consider not only the traces left by the tsunami fires but also evacuation actions, changes in daily life, and coexistence with nature from multiple perspectives.

Ishinomaki City Kadonowaki Elementary School Ruins	
How to Apply	Email: yoyaku●ishinomakiikou.net Phone: 0225-98-8630 FAX: 0225-98-8632 Address: 4-3-15 Kadonowaki-cho, Ishinomaki-shi, Miyagi
Application Deadline	At least 1 week before scheduled visit
Time Required	60-minute course / 90-minute course
Capacity	1 to 20 people per guide, 4 groups (80 people maximum) can proceed in the same tour
Multilingual Support Details and Conditions	Multilingual support available English-language display of exhibits, English-language pamphlets Possible if participants arrange for an interpreter to accompany them Multilingual tablet available with Japanese, English, Chinese (traditional and simplified), and Korean options
Activity Period & Hours	9:00–17:00 (last admission 16:00) *November–January: last admission 15:30
Closed Days	Mondays (or the following day if Monday is a national holiday) and year-end and New Year holidays (December 29–January 3) Special open days: 11th of each month, 6/12, 9/1, 11/5 (Closed on the following day if special opening day is Monday)
Fees	• Explanatory Guide: Common for both 60-minute and 90-minute courses (for high school students) 1 to 10 people: 4,000 yen, 11 to 20 people: 6,000 yen • English Explanatory Guide 1 to 10 people: 6,000 yen, 11 to 20 people: 8,000 yen
Guide Details and Parking Availability	Available 32 regular cars (including 3 spaces for the physically disabled), 2 bus boarding/alighting spaces (Bus parking is not permitted here; please use the Kadonowaki Parking in the Ishinomaki Minamihama Tsunami Memorial Park).
Others	We cannot provide additional guides if the number of participants increases on the day of the tour.
Website	https://www.ishinomakiikou.net/kadonowaki/

Ogatsu Flower Story



Ogatsu Rose Factory Garden



Volunteering experience



Provision of lectures in the garden

Photo credits
1 2 3 Ogatsu Flower Story

Program Information

- ◆ Garden tours and lectures
 - In the town of Ogatsu, Ishinomaki City, which was devastated by the earthquake and tsunami, the association will offer a lecture on how the residents of the affected area have been working for over 14 years in cooperation with various entities to create the Ogatsu Rose Factory Garden, which is to serve as a regional hub, in order to restore the area with the “power of flowers and greenery.” The lecture also includes the history of the launch of the “Ogatsu Garden Park Project” as a public-private partnership that utilizes the land left after relocation and its future prospects.
 - The tour of the Ogatsu Rose Factory Garden includes a talk about how the residents created the garden and their thoughts on reconstruction, such as how they used Ogatsu stone slate, a roofing material recovered from houses destroyed by the tsunami, for the gardening house, and how they tried to grow olives as a symbol of the reconstruction.
- ◆ Acceptance of volunteer experience
 - The volunteer experience includes weeding, fertilizing, and maintaining the garden.
- ◆ Disaster prevention education program
 - The lecture includes a video and slide presentation on disaster prevention education regarding the tsunami caused by the Great East Japan Earthquake, as well as disaster prevention education in response to a hypothetical Nankai Trough earthquake and tsunami and a near-field earthquake in the Tokyo metropolitan area.
 - At the Ogatsu Elementary School site, participants can learn about the evacuation action of 40 students and 14 teachers who were waiting in the school yard when a 10-meter tsunami warning was issued and residents called for their evacuation to the hill behind the school.

Ogatsu Flower Story	
How to Apply	Email: hirotoku3920@voice.ocn.ne.jp (mail only) FAX: 0225-98-5039 Address: 34-2 Aza Misosaku, Ogatsu-cho, Ishinomaki-shi, Miyagi
Application Deadline	At least 14 days beforehand
Time Required	Garden tours and lectures: 1 hour
Capacity	Up to 30 people
Multilingual Support Details and Conditions	Possible if participants arrange for an interpreter to accompany them
Activity Period & Hours	10:00–16:00 all year round (Please inquire in advance)
Closed Days	Tuesdays, year-end and New Year holidays
Fees	100 yen/person for volunteer experience
Guide Details and Parking Availability	Parking available (2 to 3 large buses)
Others	<ul style="list-style-type: none"> • Work clothes, work gloves, athletic shoes or long boots, towels, etc. are required for volunteer activities • May be canceled depending on weather conditions. • To join volunteer activities, volunteer insurance needs to be purchased at the local social welfare council at the time of departure. • Lunches can be arranged from a local store if needed.
Website	https://ogatsu-flowerstory.com/

MORIUMIUS



Learning about nature and the power of life at a facility built by renovating an elementary school

Photo credit

1 Japan Economic Research Institute

Program Information

- In Ogatsu, where the earthquake gave rise to a wide range of challenges, participants will engage in hands-on training that encourages them to think and act independently. Through activities such as experiencing primary industries including agriculture, forestry, and fisheries, participating in nature-based programs, and conducting interviews with local community members, participants will develop new business plans and projects to implement locally.

MORIUMIUS	
How to Apply	Email: info●moriumius.jp for reservation inquiries Address: 60 Kuwahama, Kuwahama, Ogatsu-cho, Ishinomaki-shi, Miyagi Reservation website: https://moriumius-reservation.jp/moriumius/
Application Deadline	At least 30 days beforehand
Time Required	Varies by program (e.g. 1 night, 2 days)
Capacity	10 to 40 people (approx.)
Multilingual Support Details and Conditions	Available with translation equipment, etc. Possible if participants arrange for an interpreter to accompany them
Activity Period & Hours	9:00–17:00 all year round
Closed Days	Open all year round
Fees	Varies by program
Guide Details and Parking Availability	Available: Large buses accepted
Others	
Website	https://moriumius.jp/

Onagawa Town Tourist Association



Shopping street (Seapal-Pier Onagawa)



Stroll-around guide activities (Old Onagawa Police Box)



Stroll-around guide activities (Onagawa Station Observation Deck)

Photo credits
1 2 3 Onagawa Town Tourist Association

Program Information

- After the earthquake, Onagawa Town relocated its residential areas to higher ground from the viewpoint of disaster mitigation, without building seawalls that would block the view of the town and the sea, in order to “live with the sea.” In the town walking tour, participants can learn about the history of Onagawa’s reconstruction town planning while viewing the site.
- At the Old Onagawa Police Box, a relic of the earthquake disaster, participants can feel the power of the tsunami from the overturned building. During the town walk, the participants can also hear children’s opinions, as well as the story behind the decision to preserve the earthquake disaster ruins.

Onagawa Town Tourist Association	
How to Apply	Email: seapal●onagawa.org Phone: 0225-54-4328 FAX: 0225-54-3361 Address: 2-16-5 Onagawa, Onagawa-cho, Oshika-gun, Miyagi
Application Deadline	At least 14 days beforehand
Time Required	Town walking tours are available in 80 minutes for groups and 60 minutes for small groups and families.
Capacity	1 to 40 people
Multilingual Support Details and Conditions	Arrangement of interpreters by groups acceptable Possible if participants arrange for an interpreter to accompany them
Activity Period & Hours	10:00–16:00 all year round (last admission at 15:00)
Closed Days	Open year round
Fees	Town walking tour: 11,000 yen (tax included) for a group, 3,300 yen (tax included) for a family or small group.
Guide Details and Parking Availability	Parking available
Others	Guided town walking tour for a group exceeding 20 people: 550 yen per person (tax included). Guided town walking tour for a small group of 3 people more: 1,100 yen per person (tax included). In addition to the above, lectures, bus window tours, internships in shopping districts, etc. can also be conducted.
Website	https://www.onagawa.org/

SAY'S Higashimatsushima



Scene of study tour support

Photo credit

1 SAY'S Higashimatsushima

Program Information

- Programs offered by this organization include “Disaster Prevention Stroll-Around Fieldwork” that guides visitors to the former Nobiru Station platform and Higashi-Matsushima 3.11 Disaster Recovery Memorial Museum, which are remains of the earthquake, and a “Disaster Prevention Goods-Making Experience Program” based on lessons learned from evacuation life during the disaster.

SAY'S Higashimatsushima	
How to Apply	Email: jbhng026●ybb.ne.jp Address: 1-6-6 Nobirugaoka, Higashimatsushima-shi, Miyagi
Application Deadline	Up to approx. one month prior to acceptance Applications may be submitted up to approx. one week prior to acceptance in certain cases.
Time Required	60 min., 90 min., 120 min., etc. (Depends on the content) Negotiable
Capacity	One person oversees 1 to approx. 40 participants (Guideline)
Contents and Conditions of Foreign Language Support	Possible if participants arrange for an interpreter to accompany them
Activity Period and Hours	9:00 AM - Sunset. Separate hours apply for lectures. Participant accommodations can also be visited after dinner.
Days Closed	None
Fees	(1) Disaster Prevention Stroll-Around Guided Tours for 60 min., 90 min., 120 min., etc. (2) Lectures for 30 min., 45 min., 60 min., etc. Also possible to combine (1) and (2). For more information, please contact by email. Generally, 5,000 yen to 7,000 yen with tax(per session), depending on the program content and time.
Directions and Parking Availability	• The group is a civic activity group and does not own any facilities. The location of activities will be the meeting place. Parking is available at the relevant facility.
Other	—
Website	Currently under preparation

KIBOTCHA (Kirintyou Inc.)



Utilizing a closed school

Scene during training experience

Scene from corporate training

Photo credits

1 Japan Economic Research Institute **2** KIBOTCHA **3** KIBOTCHA HP

Program Information

- Survival training that blends civilization and wilderness to endure the unexpected. Based in KIBOTCHA, both a disaster-stricken area of the Great East Japan Earthquake and a future infrastructure testing ground, participants will procure (hack) their own water, food, and equipment.
- The program features bamboo utensil crafting, fire-starting with metal matches, rope work, and a raft mission to land on a deserted island. This is a hands-on survival program that rebuilds lifelines by harnessing technology and primitive wisdom, rather than relying on textbook disaster preparedness.

KIBOTCHA (Kirintyou Inc.)	
How to Apply	E-mail: info●kibotcha.com Phone: 0225-25-7319 FAX: 0225-25-7309 Address: 80 Kameoka, Nobiru, Higashimatsushima-shi, Miyagi
Application Deadline	At least 7 days beforehand
Time Required	Varies by program (Eg, 1 night, 2 days for KIBOTCHA Kids' Disaster Preparation Education Camp)
Capacity	5 to 40 people (approx.)
Multilingual Support Details and Conditions	Multilingual support available
Activity Period & Hours	April–October
Closed Days	Tuesdays However, programs are accepted.
Fees	Approx. 20,000–100,000 yen/person
Guide Details and Parking Availability	Available, large buses permitted
Others	
Website	https://kibotcha.com/ , https://kirintyou.co.jp/

Kinoya Ishinomaki Suisan inc



Factory tour



Direct sales shop



External view of the factory

Photo credits
1 2 3 kinoya ishinomaki suisan inc.

Program Information

- Participants can view a video that shows how the factory was completely destroyed by the tsunami, and how people in the Kyodo shopping district in Tokyo cleaned the muddy canned goods and sold them as “cans of hope” as a donation to help with reconstruction. This resulted in the sale of about 220,000 cans, becoming a foothold for reconstruction.
- Based on the lesson learned from other regions’ disaster reconstruction efforts that “a company will not survive unless it can solve the problems that existed in the organization before the earthquake disaster,” the company talks about how it considered a factory that would be open to the outside world during the reconstruction phase, with tours and a direct sales shop on-site. Participants can hear about this story.

Kinoya Ishinomaki Suisan inc	
How to Apply	Phone: 0229-87-5593 Address: 2-2 Minami Hacho, Nigou, Misato-machi, Toda-gun, Miyagi
Application Deadline	At least 7 days beforehand
Time Required	40 to 80 minutes
Capacity	10 to 40 people (approx.)
Multilingual Support Details and Conditions	Possible if participants arrange for an interpreter to accompany them
Activity Period & Hours	10:00–16:00 all year round (Please inquire in advance)
Closed Days	Mondays, Obon holidays, year-end and New Year holidays
Fees	Free factory tour and video viewing
Guide Details and Parking Availability	Parking available
Others	Time Can making experience available (800 yen per person) Direct sales store for visitors to enjoy shopping for products such as canned whale yamatoni (cooked in soy sauce)
Website	https://www.kinoya.co.jp/

3.11 Memorial Network



Walking with Story Tellers



Scene of Story Teller



Application Tour

Photo credits

1 2 3 3.11Memorial Network HP

Program Information

- Through “March 11 Experienced while Walking with Storytellers,” visitors will relive the evacuation route in the vicinity of the Ishinomaki City Kadonowaki Elementary School Ruins, Miyagi 3.11 Tsunami Disaster Memorial Museum, MEET Kadonowaki, and Minamihama Tsunami Memorial Park. In addition, a variety of other programs are offered, including combinations with storytelling at Okawa Elementary School, human resources training workshops, and original tours.
- March 11 Experienced while Walking with Storytellers (Memorial Park and Disaster Ruins)
- Corporate Training Session: “Leadership and Crisis Management”
- AR App Utilization Field Disaster Prevention Guide
- Storytellers (Ishinomaki/Online/Dispatch)
- Coordination of disaster prevention education and human resource training in Iwate, Miyagi, and Fukushima

3.11 Memorial Network	
How to Apply	<ul style="list-style-type: none"> • HP : https://311support.com/training • Email: info●311support.com
Application Deadline	• Up to one week prior to program
Time Required	• 30 min.-1.5 days (Can be selected depending on the program)
Acceptable Number of People	• 1-30 participants
Contents and Conditions of Foreign Language Support	<ul style="list-style-type: none"> • Explanations in foreign languages available • Can be supported with use of translation equipment, etc. (through means such as utilizing English-language displays, English-language pamphlets, and translation machines) • Possible if participants arrange for an interpreter to accompany them
Activity Period and Hours	<ul style="list-style-type: none"> • 9:00 AM - 6:00 PM • Open every day except the New Year’s holiday period
Days Closed	• New Year’s holiday period
Fees	• From 550 yen per person (High school students and younger; 30 min.) (Can be selected depending on the program)
Directions and Parking Availability	• Available
Other	—
Websites	<ul style="list-style-type: none"> • https://311support.com/training • https://www.facebook.com/ganbappe/

Ruins of the Great East Japan Earthquake: Sendai Arahama Elementary School



1 Scene of explanation in the school building by an employee



2 First floor corridor and classrooms with remains of the tsunami



3 Arahama area and the sea seen from the rooftop

Photo credits

1 Portal Site of Reconstruction for Expo 2025 Osaka, kansai

2 Ruins of the Great East Japan Earthquake: Sendai Arahama Elementary School

3 Reconstruction Agency

Program Information

- The school building, which was inundated up to the second floor by the tsunami, has been preserved as it was at the time of the earthquake for it to serve as a relic of the earthquake disaster. Guided by staff members, visitors can follow the traces left in classrooms and hallways, photos, and testimonial videos and learn about the process from the disaster to evacuation and rescue, as well as the damage to the community.
- From the rooftop, one can see the location of the Arahama area, which used to be lined with houses, and the ocean. Visitors can think about disaster prevention and mitigation while reliving the events of the disaster and evacuation through dioramas and exhibits that recreate the town as it was before the earthquake.

Ruins of the Great East Japan Earthquake: Sendai Arahama Elementary School

How to Apply	Email: arahama●sendai311-memorial.jp Phone/Fax: 022-355-8517 at Management Office of Sendai City Arahama Elementary School Disaster Ruins Phone: 022-214-1117 at Disaster Prevention and Environment City Promotion Office, City Planning Policy Bureau Address: 32-1 Shinborihata, Arahama-Aza, Wakabayashi-ku, Sendai-shi, Miyagi
Application Deadline	The museum is open to visitors. Please contact the management office in advance if you would like a guided tour.
Time Required	30 to 90 minutes
Capacity	1 up to about 150 people
Multilingual Support Details and Conditions	—
Activity Period & Hours	9:30–16:00 (9:30–17:00 in July and August)
Closed Days	Mondays and 4th Thursday (except national holidays), year-end and New Year holidays (December 29–January 4)
Fees	Free
Guide Details and Parking Availability	Available
Others	The school building, which still bears the scars of the tsunami, is open to the public as a relic of the earthquake disaster to pass the threat and lessons of the tsunami down to future generations.
Website	https://arahama.sendai311-memorial.jp/index.html

Sendai 3/11 Memorial Community Center



Sendai 3/11 Memorial Community Center

Photo credit

1 Sendai 3/11 Memorial Community Center

Program Information

- The panels and maps on display in the Community Center provide information on the damage caused by the earthquake and the state of restoration and recovery efforts.

Sendai 3/11 Memorial Community Center	
How to Apply	Email: office●sendai311-memorial.jp Phone: 022-390-9022 Address: 85-4 Kutsugata, Arai-Aza, Wakabayashi-ku, Sendai-shi, Miyagi, within Arai Station on the Subway Tozai Line
Application Deadline	—
Time Required	30 to 60 minutes
Capacity	About 40 people maximum
Multilingual Support Details and Conditions	Available with translation equipment, etc. Possible if participants arrange for an interpreter to accompany them
Activity Period & Hours	10:00–17:00 all year round
Closed Days	Mondays (or the following day if Monday is a national holiday) The day following a national holiday (excluding Saturdays, Sundays, and holidays)
Fees	Free
Guide Details and Parking Availability	No parking (paid parking available nearby)
Others	—
Website	https://sendai311-memorial.jp/

Gamo Nakano Kyoshukan



1

Exhibition in the Kyoshukan (“Nostalgia Hall”)



2

Scene of guide activities in the power plant



3

Scene of guide activities in the exhibition room

Photo credits

1 2 3 Gamo Nakano Kyoshukan

Program Information

- The Gamo Nakano district was designated as a disaster risk area due to the tsunami disaster. “Gamo Nakano Kyoshukan,” which is located in a newly-operated biomass power plant on the site of the mass relocation, presents an integrated exhibit on the history and characteristics of the area, the earthquake disaster, the natural environment centered on the Gamo Tidal Flat, and the new role of energy and power generation at this location.
- The exhibition rooms of the “Kyoshukan,” or Nostalgia Hall, can be visited without a reservation. In addition, a guided tour of the power plant and exhibition rooms is offered as a program for groups with advance reservations.

Gamo Nakano Kyoshukan

How to Apply	Email: info●mmb-energy.jp Address: 4-1-1 Gamo, Miyagino-ku, Sendai-shi, Miyagi (Morinomiyako Biomass Power Plant, Administration Building, 1st Floor)
Application Deadline	Reservations are not required for the “Kyoshukan” (Nostalgia Hall) tour. Group/power plant tours are available by reservation only.
Time Required	“Kyoshukan:” 20-30 min. / Power Plant: 60-90 min.
Capacity	10-40 participants (Guideline for a group tour)
Contents and Conditions of Foreign Language Support	<ul style="list-style-type: none"> • Possible if participants arrange for an interpreter to accompany them • All exhibits are in Japanese. If this is acceptable and you would like a tour, please ask about one.
Activity Period and Hours	10:00 AM - 4:00 PM year-round
Days Closed	Mondays (or Tuesday if Monday is a national holiday) The day following a national holiday (excluding Saturdays, Sundays, and national holidays) New Year’s holiday period and temporary closures
Fees	“Kyoshukan”: Free of charge / Power Plant: 500 yen per person
Directions and Parking Availability	Please use a nearby parking lot. (Please ask about group tours.)
Other	If guide activities provided by an explainer are needed, please ask when applying.
Website	https://mmb-energy.jp/kyoshukan/

Tsunami Recovery Memorial Museum “Mémoire de Yuriage”



Scene of guide activities

Photo credit
 1 Reconstruction Agency

Program Information

- The program features guides and storytellers who have resided in the region over time conveying experiences of the disaster passed down in Yuriage, including circumstances at the time of the earthquake and the progress of reconstruction, through tours of the traces of the disaster outdoors and the viewing of videos and storytelling inside the museum.

Tsunami Recovery Memorial Museum “Mémoire de Yuriage”	
How to Apply	Please apply using the reservation form on the Tsunami Recovery Memorial Museum HP
Application Deadline	20 days before the desired date
Time Required	30-90 min.
Capacity	Up to 50 people (guideline)
Multilingual Support Details and Conditions	Possible if participants arrange for an interpreter to accompany them English-subtitled videos and English brochure are available
Activity Period and Hours	Mondays, Tuesdays, Wednesdays, Fridays, and Saturdays: 10:00 AM - 3:00 PM Sundays and national holidays: 9:00 AM - 3:00 PM
Days Closed	Thursdays Mornings on the third Sunday of even-numbered months
Fees	* See website for details
Guide Details and Parking Availability	No dedicated parking area for the facility
Other	
Websites	https://tsunami-memorial.org/ * Program Fees https://tsunami-memorial.org/program/

Fram Natori, A General Incorporated Association (Association to Tell the Story of the Yuriage Earthquake)



Stroll-around program

Photo credit

1 Fram Natori, A General Incorporated Association

Program Information

- This is a stroll-around program in which local residents guide visitors around the Earthquake Disaster Memorial Park (Hiyoriyama and the memorial monument) and the Earthquake Reconstruction Museum and explain the situation at the time of the earthquake and the progress of reconstruction in the area while visiting places where local memories remain.

Fram Natori, A General Incorporated Association (Association to Tell the Story of the Yuriage Earthquake)

How to Apply	Email: natorijapan@gmail.com Phone: 090-3583-1359 (c/o: Kakui, Secretariat, Fram Natori, A General Incorporated Association) (Application) Address: Inside Natori NPO Center, 5-6-1 Otemachi, Natori-shi, Miyagi Please download the application form from the Natori Tourism Association website and apply by fax or email.
Application Deadline	At least 20 days prior to acceptance.
Time Required	• 50-min. course • 90-min. course
Capacity	1-150 people • Up to 3 buses (accepted at one time)
Multilingual Support Details and Conditions	—
Activity Period and Hours	Summer (April-October): 9:00 AM - 5:00 PM Winter (November-March): 10:00 AM - 4:00 PM
Days Closed	March 11, the day of the Natori City Summer Festival Third Sunday of October Closed irregularly and during the New Year's holiday period
Fees	Key Points of Interest Tour (50-min. course): 5,000 yen DVD Viewing and Onsite Tour (90-min. course): 7,000 yen Optional Tour (150-min. course): Fee negotiable
Guide Details and Parking Availability	Available: Natori Earthquake Reconstruction Museum and Natori Earthquake Disaster Memorial Park (Public transportation recommended)
Other	
Websites	https://www.framnatori.com/ , https://framnatori.jimdofree.com/

Iwanuma Earthquake Disaster Storyteller's Group (Iwanuma Millennium Hope Hills Exchange Center)



Evacuation hill in Ainokama Park

Photo credit

1 Reconstruction Agency

Program Information

- The tour will take participants on a walk with a storyteller through Millennium Hope Hills Ainogama Park, a symbol of Iwanuma City's reconstruction, where they will listen to explanations about the memorial monument and evacuation hill and learn about the situation of Iwanuma City at the time of the earthquake, the progress of reconstruction from the earthquake disaster, and the lessons of the phrase "Be Prepared, Always!"

Iwanuma Earthquake Disaster Storyteller's Group (Iwanuma Millennium Hope Hills Exchange Center)	
How to Apply	Email: kouryu●city.iwanuma.miyagi.jp Phone/Fax: 0223-23-8577 Address: 177 Aza-hama, Shimonogo, Iwanuma-shi, Miyagi
Application Deadline	At least 7 days beforehand
Time Required	60 to 90 minutes
Capacity	5 to 30 people (approx.)
Multilingual Support Details and Conditions	Arrangement of interpreters by groups acceptable Possible if participants arrange for an interpreter to accompany them
Activity Period & Hours	9:00-17:00 all year round
Closed Days	Tuesdays (or the following day if Tuesday is a national holiday) Year-end and New Year holidays (December 26-January 7)
Fees	3,000 yen per guide
Guide Details and Parking Availability	75 regular cars (including 2 spaces for the physically disabled), 2 spaces designated for large buses
Others	
Website	https://sennen-kibouno-oka.com/

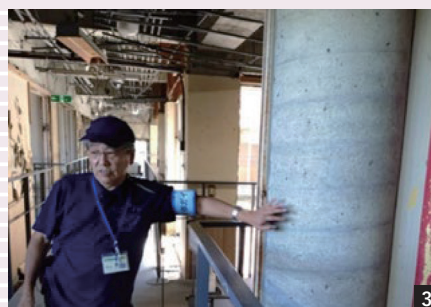
Yamamoto Kataribe Association (Ruins of the Great East Japan Earthquake: Nakahama Elementary School, Yamamoto-cho)



External view of the school building



Classrooms and hallways with remains of the tsunami



Scene of explanation by the storyteller

Photo credits
1 2 3 Japan Economic research Institute

Program Information

- At Ruins of the Great East Japan Earthquake: Nakahama Elementary School, tsunami flooding reached the second floor, guided by storytellers and staff, participants will learn about disaster-prevention features such as the raised school grounds and cylindrical pillars, and about how the evacuation to the rooftop successfully saved the lives of all 90 people affected.
- This program enables participants to concretely explore the characteristics of tsunamis and the reasoning behind evacuation strategies based on time through the courtyard layout between the north and south school buildings, the role played by the gymnasium, visible traces of the tsunami's curved flow, and video and interactive exhibits.

Yamamoto Kataribe Association (Ruins of the Great East Japan Earthquake: Nakahama Elementary School, Yamamoto-cho)

How to Apply	Download the application form from the website Email: nakahamaguide@gmail.com (Ruins of the Great East Japan Earthquake: Nakahama Elementary School) Phone: 0223-23-1171 (Ruins of the Great East Japan Earthquake: Nakahama Elementary School) FAX: 0223-23-1172 (Ruins of the Great East Japan Earthquake: Nakahama Elementary School) Address: 22-2 Kune, Sakamoto, Yamamoto-cho, Miyagi (Ruins of the Great East Japan Earthquake: Nakahama Elementary School)
Application Deadline	In principle, 20 days prior to the scheduled visit
Time Required	45 to 90 minutes
Capacity	Up to 20 people per storytelling guide 1 to 100 people (Please inquire in advance in the case of over 100 people)
Multilingual Support Details and Conditions	Available with translation equipment, etc. Possible if participants arrange for an interpreter to accompany them
Activity Period & Hours	9:30-16:30 (last admission 16:00)
Closed Days	Guided tours of the town are held all year-round, with no fixed closed days * Ruins of the Great East Japan Earthquake: Nakahama Elementary School are closed on Mondays (or the following day if Monday is a national holiday), closed year-end and New Year holidays (December 28 - January 4)
Fees	Tour of the earthquake site: Storyteller guide fee: 5,000 yen/group (Groups of 1 to 20 people are organized) Optional off-site tours Tour of town reconstruction 7,000 yen/unit, Body clock training 3,000 yen/unit Evacuation drill on foot 3,000 yen/group
Guide Details and Parking Availability	Available: 3 large buses, 22 private cars + 10 cars in Parking Lot 2, road bike stands available
Others	Storyteller guide plans are available for elementary, junior high, and high schools. If the visiting school wishes to do so, "online pre-learning" can be conducted approximately one week prior to the tour. (Please inquire in advance)
Website	https://www.town.yamamoto.miyagi.jp/site/ruins-nakahama/ (Ruins of the Great East Japan Earthquake: Nakahama Elementary School)

Soma City Tourism Association



Scene of earthquake disaster/disaster prevention and inquiry-based learning

Photo credit

1 Soma City Tourism Association

Program Information

- This program combines visits to memorial monuments and the 2011 Tsunami and Earthquake Victims Memorial Hall of Soma City; talks by disaster storytellers; hands-on experiences related to local industries; and fieldwork viewing seawalls, disaster-prevention green spaces, and disaster public housing relocated to the higher ground from the rooftop of the port construction office.

Soma City Tourism Association

How to Apply	Email: kanko●bb.soma.or.jp Phone: 0244-35-3300 Address: 55-1 Nakamura Kitamachi, Soma-shi, Fukushima
Application Deadline	At least 14 days beforehand
Time Required	Approx. 180 minutes
Capacity	30 people
Multilingual Support Details and Conditions	Possible if participants arrange for an interpreter to accompany them
Activity Period & Hours	Weekdays 9:00–17:00
Closed Days	Tourism Association: Year-end and New Year holidays * Reconstruction observation tours are closed on Saturdays, Sundays, and national holidays
Fees	Guide fee: 1,000 yen per person for the earthquake/disaster prevention study course 2,000 yen per person for earthquake and thematic courses (Visit the website for details)
Guide Details and Parking Availability	Available
Others	
Website	https://soma-kanko.jp/education-tour/

Asubito Fukushima



Fostering Fukushima's next generation through interaction with local role models



Training for working professionals to enhance their aspirations and leadership



Educational trips to experience a disaster area and reflecting on oneself

Photo credits
1 2 3 Asubito Fukushima

Program Information

◆ Training programs for adults

Over two days, participants will engage with the realities of the disaster-affected coastal areas of Fukushima, take part in repeated dialogue with local leaders, and deeply reflect on their own aspirations and those of society and their work, and strengthen their purpose and leadership.

- Experiencing the Fukushima coastal areas and disaster-stricken sites firsthand
- Dialogue with local leaders who have taken the initiative to create new value
- Through this experience in Fukushima, participants confront their aspirations for themselves, society, and work, as well as their purpose and leadership.

◆ Educational tourism program

Drawing on two programs, Asubito Fukushima's next-generation development initiative and its training program for working adults, an educational travel program was created for students from outside the prefecture. The program consists of three elements and is a learning experience for out-of-prefecture students.

- Fieldwork confronting the shadows and hope for Fukushima's coastal areas and disaster-stricken regions
- Dialogue and workshops with local leaders who with aspirations and are walking toward the future
- Workshop for engaging with your future and society's future

Asubito Fukushima	
How to Apply	Email: info●asubito.or.jp Phone: 0244-26-5623 FAX:0244-26-5624 Address: 15 Izumimaemuki, Haramachi-ku, Minamisoma-shi, Fukushima
Application Deadline	About 6 months prior to implementation
Time Required	<Training program for working adults> 2-day program <Educational tourism> 1.5-day program
Capacity	<Training program for working adults> 10 to 20 people (approx.) <Educational tourism> 20 to 30 people (approx.)
Multilingual Support Details and Conditions	Possible if participants arrange for an interpreter to accompany them
Activity Period & Hours	9:00-17:30 all year round
Closed Days	Year-end and New Year holidays
Fees	Please contact us for details
Guide Details and Parking Availability	Available
Others	
Website	https://asubito.or.jp/

OWB CO., LTD



Lecture by Representative Wada



Representative Wada



Exterior view of Odaka Pioneer Village

Photo credits

1 OWB CO., LTD HP **2****3** Cabinet Office HP

Program Information

- In an evacuation zone after the nuclear power plant accident where it was widely believed that young people would never return, participants will learn about an initiative aimed at achieving regional self-reliance by creating 100 businesses by 2051. Thanks to efforts to foster new ventures, 30 businesses have already been created, and a growing number of young entrepreneurs now consider Odaka to be an ideal place to launch a business from scratch.

OWB CO., LTD	
How to Apply	E-mail: con●owb.jp Phone: 0244-26-4665 Address: Odaka Pioneer Village, 1-87 Motomachi, Odaka-ku, Minamisoma-shi, Fukushima
Application Deadline	At least 7 days beforehand
Time Required	60 minutes
Capacity	1 to 40 people
Multilingual Support Details and Conditions	Possible if participants arrange for an interpreter to accompany them
Activity Period & Hours	Weekdays 10:00–16:00 all year round
Closed Days	Saturdays, Sundays, national holidays, Obon holidays, year-end and New Year holidays, other
Fees	General fee: 3,300 yen per person, flat fee for 10 or more: 33,000 yen *Flat fee of 13,200 yen even for 4 people or less Educational institution fee: 2,200 yen per person, flat fee for 10 or more: 22,000 yen *Flat fee of 8,800 yen even for 4 people or less The lecture plan by Tomoyuki Wada, Representative Director, is 55,000 yen per session (60 minutes) * See website for details
Guide Details and Parking Availability	Available
Others	English is available for general fee plans only
Website	https://owb.jp/

The Great East Japan Earthquake and Nuclear Disaster Memorial Museum



Scene of a storyteller lecture



Exterior view of the facility



Fieldwork

Photo credits

1 Japan Economic Research Institute

2 3 The Great East Japan Earthquake and Nuclear Disaster Memorial Museum

Program Information

- The program offers Training Storyteller Lectures, where disaster survivors share not only their anxieties and grief during the earthquake but also their disaster preparedness and reconstruction efforts. It also includes fieldwork, where participants visit disaster sites in Futaba Town, where the Memorial Museum is located, and neighboring Namie Town by bus to see the current state of the disaster and reconstruction. Additionally, workshops allow participants to share their impressions from exhibitions and training sessions to deepen their insights.

The Great East Japan Earthquake and Nuclear Disaster Memorial Museum

How to Apply	Email: densyokan-yoyaku@fipo.or.jp Phone: 0240-23-4402 Address: 39 Takada, Nakano, Futaba-machi, Futaba-gun, Fukushima Please apply using the reservation form on the Memorial Museum website or send us an e-mail using the reservation format (Reservation Form for Visiting the Museum).
Application Deadline	Apply at least 3 weeks before each training
Time Required	(1) Exhibition tour: approx. 60 minutes (2) Lecture by training storyteller: 40 minutes (3) Fieldwork: 60 minutes (4) Workshop: 60 minutes * (1) is required and (2) and (3) are optional. * (4) can be selected only when (2) and (3) are conducted (full package)
Capacity	In principle, for 20 people or more
Multilingual Support Details and Conditions	Multilingual explanations available (fieldwork only) Available with translation equipment, etc. Possible if participants arrange for an interpreter to accompany them
Activity Period & Hours	All year round
Closed Days	Tuesdays (or the following day if Tuesday is a national holiday) and year-end and New Year holidays (December 29–January 3)
Fees	(Fee per person for each program) Adults 1,000 yen; Elementary, junior high, and high school students 500 yen * A separate admission fee is required (Adults: 600 yen, Elementary, junior high, and high school students: 300 yen) * A training room usage fee is charged separately * Minimum fee for each program for less than 20 people (minimum fee: 20,000 yen (adults), 10,000 yen (elementary, junior high, and high school))
Guide Details and Parking Availability	Free: 10 large buses, 110 regular cars
Others	
Website	https://www.fipo.or.jp/lore/

ASANONENSHI CO., LTD



Explanation of the process leading up to the establishment of a factory presence in Futaba Town

Photo credit

1 ASANONENSHI CO., LTD

Program Information

- Visitors can learn about the process of how ASANONENSHI, based in Gifu, built a factory in Futaba Town, hear about the passion of the mayor of Futaba Town and the resolve of the president when he made the final decision, and learn about the company's history depicted on the walls, while observing the manufacturing process.

ASANONENSHI CO., LTD

How to Apply	Email: info-futaba@asanen.co.jp * Public Relations (for tour inquiries) Phone: 0240-23-7648 Address: 875-1 Naka, Anpachi-cho, Anpachi-gun, Gifu
Application Deadline	At least 7 days beforehand
Time Required	40 to 70 minutes
Capacity	10 people or more
Multilingual Support Details and Conditions	Possible if participants arrange for an interpreter to accompany them
Activity Period & Hours	10:00–18:00
Closed Days	Mondays
Fees	Free
Guide Details and Parking Availability	Parking available
Others	—
Website	https://asanen.co.jp/futabamaru/

NPO Tomioka-machi 3.11 Talking Group



Scene of fieldwork

Photo credit

1 Reconstruction Agency

Program Information

- The fieldwork program will take participants to the Tomioka Station area, coastal areas, the Yonomori district, the former Tomioka shopping district, and other locations to explain the impact of the tsunami and nuclear disaster on the town and the progress of recovery and revitalization, incorporating photos from the time when people began returning to their homes.

NPO Tomioka-machi 3.11 Talking Group	
How to Apply	Email: kataribe_office●tomioka311.com Phone: 0240-23-5431 Address: Office 1, Sakura Mall Tomioka, 3-53 Chuo, Tomioka-machi, Futaba-gun, Fukushima
Application Deadline	At least 1 week beforehand
Time Required	60 to 120 minutes/time
Capacity	1 person to unlimited
Multilingual Support Details and Conditions	Possible if participants arrange for an interpreter to accompany them
Activity Period & Hours	9:00–17:00 on weekdays * Office hours
Closed Days	Depending on the storyteller's schedule
Fees	Multiple plans available. Visit the website for details.
Guide Details and Parking Availability	Parking available
Others	—
Website	https://www.tomioka311.com/kataribe_order.html https://x.com/tomioka311 https://www.facebook.com/kataribe.sakura

TEPCO Decommissioning Archive Center



Exterior view of the facility

Photo credit

1 Japan Economic Research Institute

Program Information

- Participants can learn about the detailed records of the nuclear accident in Fukushima from the time of the disaster to the present, TEPCO's reflections and lessons learned, the current status of decommissioning, and the road ahead, with detailed explanations of each exhibit.

TEPCO Decommissioning Archive Center	
How to Apply	Phone: 0120-502-957 Address: 3-58 Chuo, Tomioka-machi, Futaba-gun, Fukushima
Application Deadline	At least 1 week beforehand
Time Required	About 60 minutes
Capacity	Only up to 20 people per group (prior confirmation required due to limited number of correspondents)
Multilingual Support Details and Conditions	Exhibits: English version available partly, correspondents limited
Activity Period & Hours	9:30–16:30 all year round Last admission at 16:00
Closed Days	3rd Sunday of every month, year-end and New Year holidays
Fees	Free
Guide Details and Parking Availability	Available
Others	—
Website	https://www.tepco.co.jp/fukushima_hq/decommissioning_ac/

J-VILLAGE Inc.



J-Village

Photo credit
1 J-VILLAGE Inc.

Program Information

- The “Learning from the Disaster in J-VILLAGE” exhibit will provide visitors with an opportunity to learn about how the area became a base for dealing with the Fukushima Daiichi Nuclear Power Station accident after the Great East Japan Earthquake, through video and wall exhibit explanations. The visitors can also experience the natural grass of J-VILLAGE.

J-VILLAGE Inc.	
How to Apply	Email: unei@j-village.jp Phone: 0240-26-0111 Address: Hirono-machi and Naraha-machi, Fukushima
Application Deadline	At least 7 days beforehand
Time Required	30 to 60 minutes
Capacity	Capacity of up to 100 people
Multilingual Support Details and Conditions	Must be accompanied by an interpreter
Activity Period & Hours	9:00–18:00 all year round
Closed Days	
Fees	Please inquire in advance
Guide Details and Parking Availability	Available (15 large cars, 600 regular cars)
Others	
Website	https://j-village.jp/

Iwaki 3.11 Memorial and Revitalisation Museum



Scene of a lecture in the facility



Exterior view of the Iwaki 3.11 Memorial and Revitalisation Museum



Scene of training

Photo credits

1 Japan Economic Research Institute 2 3 Iwaki 3.11 Memorial and Revitalisation Museum

Program Information

- The program will not only allow visitors to learn from the memories of the Great East Japan Earthquake and absorb this knowledge as something to live by but also provide them with an opportunity to learn more about local community development and recovery/reconstruction projects in Iwaki City, which suffered from an unprecedented combined disaster of earthquake, tsunami, and nuclear accident.
- Visitors can realize the importance of communicating and knowing by learning about the events that resulted in the loss of many lives due to the failure to pass down to the next generation the fact that “if there is an earthquake, there will be a tsunami,” despite the area’s past experiences with tsunamis.

Iwaki 3.11 Memorial and Revitalisation Museum	
How to Apply	Download the application from the facility’s website, https://memorial-iwaki.com/ , and send it by email or fax to apply Email: info@memorial-iwaki.com Phone: 0246-38-4894 Fax: 0246-38-4895 Address: 3-11 Usuiso, Iwaki-shi, Fukushima
Application Deadline	At least 14 days in advance
Time Required	<ul style="list-style-type: none"> • Storyteller’s lecture only: about 60 minutes * Guided tour on board a group bus • Facility tour + Storyteller’s lecture: 90 minutes (Please inquire in advance) * Separate tour program available for group use by educational tours, etc.
Capacity	Memorial and Revitalisation Museum exhibition room: 60 people, multi-purpose study room: 35 people
Multilingual Support Details and Conditions	Available with translation equipment, etc. Possible if participants arrange for an interpreter to accompany them
Activity Period & Hours	9:00–17:00 (last admission 16:30)
Closed Days	Mondays (or the following weekday if Monday is a national holiday), year-end and New Year holidays (December 29–January 3)
Fees	5,000 yen per hour per storyteller
Guide Details and Parking Availability	Parking available (32 regular cars, 2 large cars)
Others	Advance reservations required for groups of 10 people or more
Website	https://memorial-iwaki.com/